



ECG Ridge Road, LP
1030 16th Avenue South, Suite 500
Nashville, TN 37212

July 22, 2025

Mr. Mike Rogers, Chair
Housing Finance Authority of Leon County
301 South Monroe Street
Tallahassee, FL 32301

Re: Ridge Road (RFA 2021-205 (2022-190S) / 2021-517C) Change Request

Dear Mr. Rogers:

ECG Ridge Road, LP (the “Partnership”) submitted to the Housing Finance Authority of Leon County (“HFA LC”) an application for \$51,000,000 in MMRB and an application for SAIL funding, CHIRP funding, and 4% LIHTCs under RFA 2021-205 and the 2022 CHIRP ITP for the Ridge Road project (the “Project”). HFA LC approved the issuance of the MMRB, and the Project achieved financial closing on March 1, 2023 and is currently in lease-up.

In order to accomplish certain business restructuring objectives, the Partnership is requesting approval for several changes to the ownership structure of the General Partner and Developer entities of the Applicant.

The proposed changes include (i) minor adjustments to the membership percentages of the members of the General Partner, (ii) the removal of one member (Seibels Affordable Trust) from one of the members (Elmington Affordable, LLC) of the General Partner (and redistribution of those interests to the remaining members of that member of the General Partner, and (iii) making identical changes to ECG Ridge Road Developer, LLC.

There are no Natural Persons to be added or removed from the Applicant as a result of this request.

Enclosed are the existing and proposed organizational charts and FHFC Principal Disclosure Forms.

Thank you for your consideration, and please let me know if you have any questions about our requests.

Respectfully,

Mr. Mike Rogers

Page 2

July 22, 2025

A handwritten signature in blue ink, appearing to read "C. Hunter Nelson". The signature is fluid and cursive, with the first name "C." being small and the last name "Nelson" being larger and more prominent.

C. Hunter Nelson

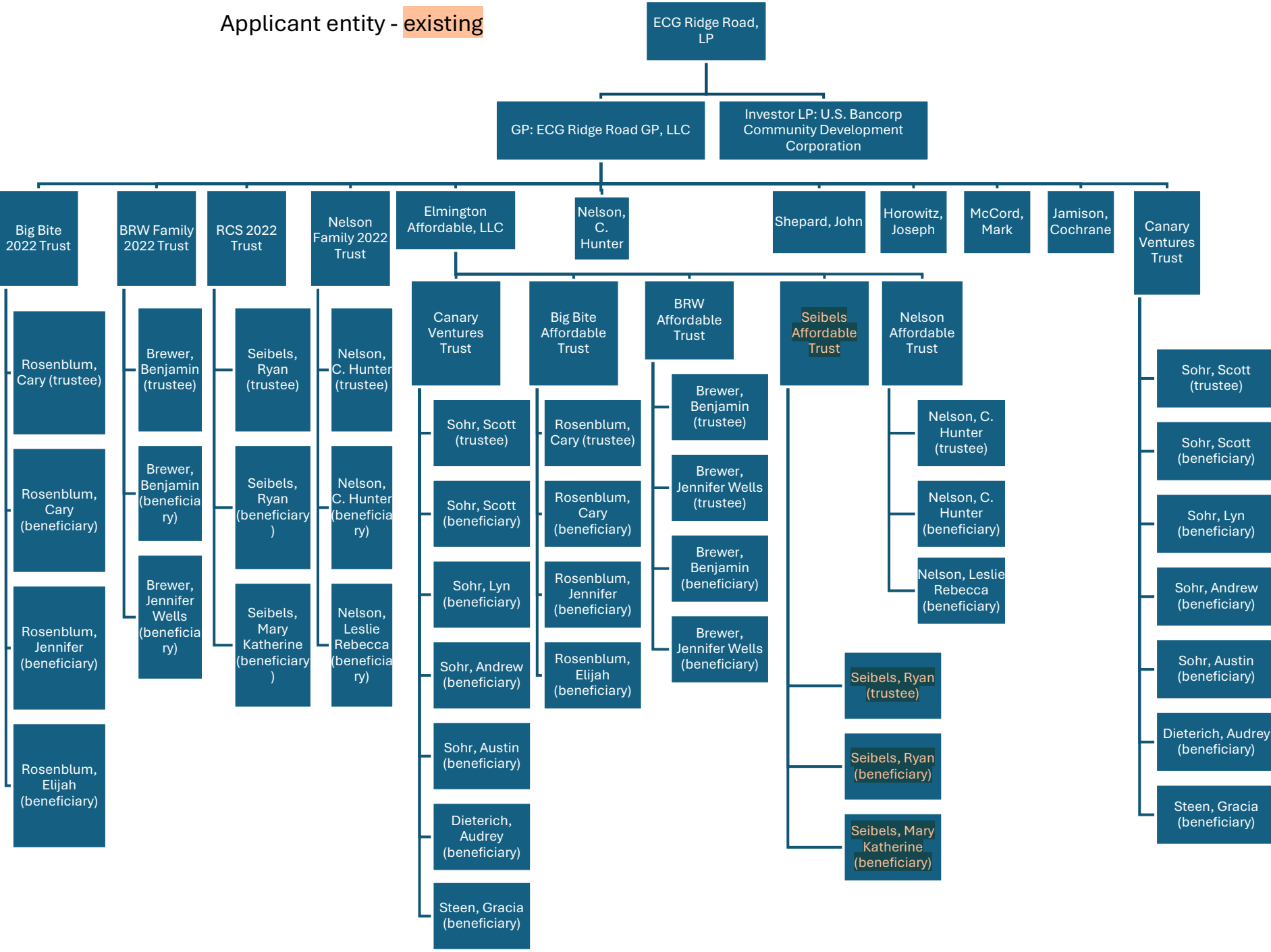
Managing Member

ECG Ridge Road GP, LLC

Enclosures

Org Charts

Applicant entity - existing



Applicant entity - **proposed**

ECG Ridge Road, LP

GP: ECG Ridge Road GP, LLC

Investor LP: U.S. Bancorp
Community Development
Corporation

Big Bite 2022
Trust

BRW Family
2022 Trust

RCS 2022
Trust

Nelson
Family 2022
Trust

Elmington
Affordable, LLC

Nelson,
C.
Hunter

Shepard, John

Horowitz,
Joseph

McCord,
Mark

Jamison,
Cochrane

Canary
Ventures
Trust

Rosenblum,
Cary (trustee)

Rosenblum,
Cary
(beneficiary)

Rosenblum,
Jennifer
(beneficiary)

Rosenblum,
Elijah
(beneficiary)

Brewer,
Benjamin
(trustee)

Brewer,
Benjamin
(beneficiary)

Brewer,
Jennifer
Wells
(beneficiary)

Seibels,
Ryan
(trustee)

Seibels,
Ryan
(beneficiary)

Seibels,
Mary
Katherine
(beneficiary)

Nelson,
C. Hunter
(trustee)

Nelson,
C. Hunter
(beneficiary)

Nelson,
Leslie
Rebecca
(beneficiary)

Canary
Ventures Trust

Sohr, Scott
(trustee)

Sohr, Scott
(beneficiary)

Sohr, Lyn
(beneficiary)

Sohr, Andrew
(beneficiary)

Sohr, Austin
(beneficiary)

Dieterich,
Audrey
(beneficiary)

Steen, Gracia
(beneficiary)

Big Bite
Affordable
Trust

Rosenblum,
Cary (trustee)

Rosenblum,
Cary
(beneficiary)

Rosenblum,
Jennifer
(beneficiary)

Rosenblum,
Elijah
(beneficiary)

BRW
Affordable
Trust

Brewer,
Benjamin
(trustee)

Brewer, Jennifer
Wells (trustee)

Brewer,
Benjamin
(beneficiary)

Brewer, Jennifer
Wells
(beneficiary)

Nelson
Affordable
Trust

Nelson, C.
Hunter
(trustee)

Nelson, C.
Hunter
(beneficiary)

Nelson, Leslie
Rebecca
(beneficiary)

Seibels Trust omitted

Sohr, Scott (trustee)

Sohr, Scott
(beneficiary)

Sohr, Lyn
(beneficiary)

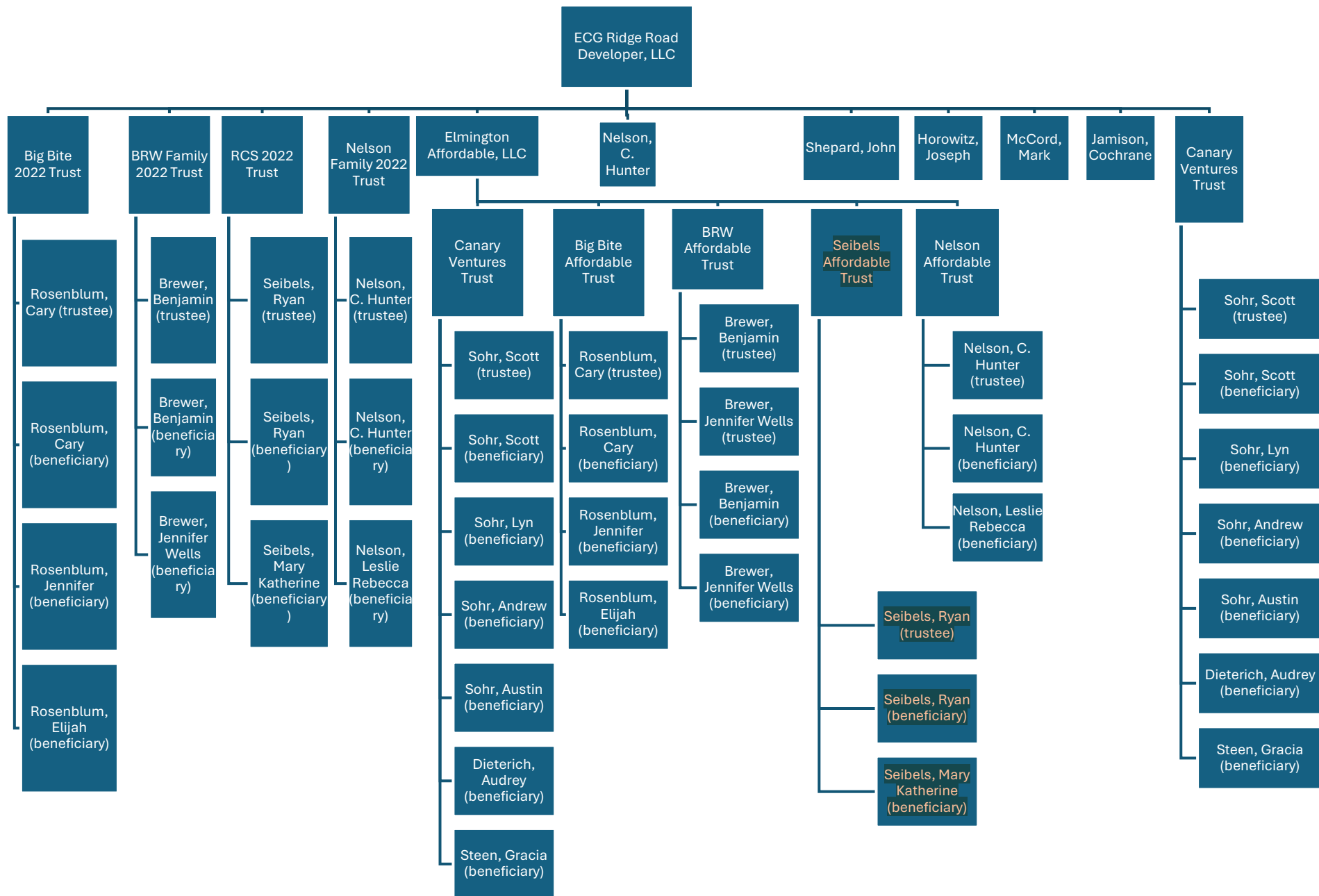
Sohr, Andrew
(beneficiary)

Sohr, Austin
(beneficiary)

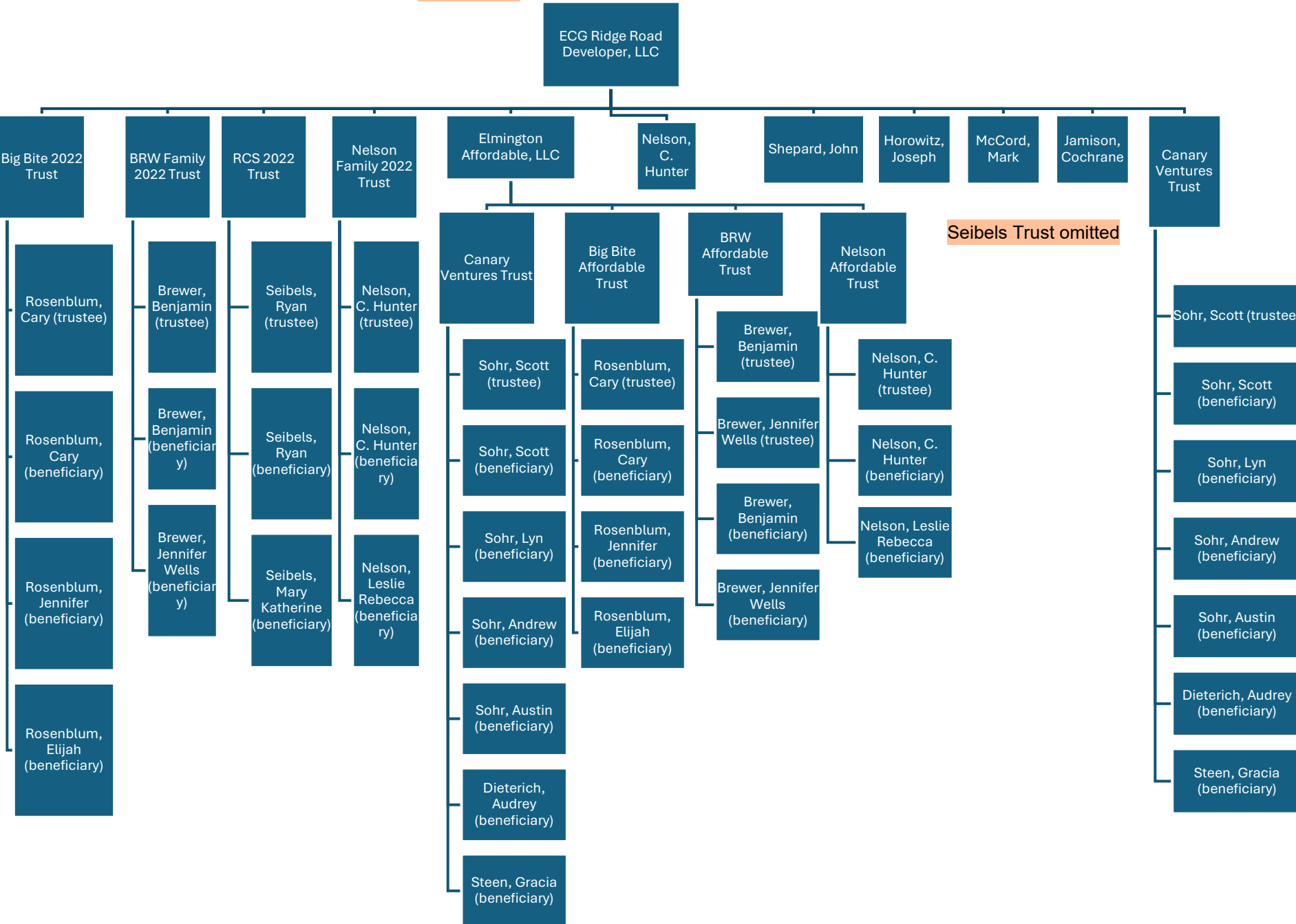
Dieterich, Audrey
(beneficiary)

Steen, Gracia
(beneficiary)

Developer entity - existing



Developer entity - **proposed**



Approved Principal Disclosure Form

The Applicant is a: **Limited Partnership**

ECG Ridge Road, LP

% Ownership input features will not be made available until invitation to credit underwriting

[Click here for Assistance with Completing the Entries for the First Level Principal Disclosure for the Applicant](#)

<u>First Level Entity #</u>	<u>Select Type of Principal of Applicant</u>	<u>Enter Name of First Level Principal</u>	<u>Select organizational structure of First Level Principal identified</u>	<u>% Ownership of Applicant</u>
1.	Investor LP	U.S. Bancorp Community Development Corporation	For-Profit Corporation	99.9900%
2.	General Partner	ECG Ridge Road GP, LLC	Limited Liability Company	0.0100%
3.	<Select an option>		<Select an option>	
4.	<Select an option>		<Select an option>	
5.	<Select an option>		<Select an option>	
6.	<Select an option>		<Select an option>	
7.	<Select an option>		<Select an option>	
8.	<Select an option>		<Select an option>	
9.	<Select an option>		<Select an option>	
10.	<Select an option>		<Select an option>	
11.	<Select an option>		<Select an option>	
12.	<Select an option>		<Select an option>	
13.	<Select an option>		<Select an option>	
14.	<Select an option>		<Select an option>	
15.	<Select an option>		<Select an option>	
16.	<Select an option>		<Select an option>	
17.	<Select an option>		<Select an option>	
18.	<Select an option>		<Select an option>	
19.	<Select an option>		<Select an option>	
20.	<Select an option>		<Select an option>	

ECG Ridge Road, LP

[Click here for Assistance with Completing the Entries for the Second Level Principal Disclosure for the Applicant](#)

[illegible]

Principal Disclosures for the Applicant

[illegible]**Third Principal Disclosure Level:**

ECG Ridge Road, LP

[Click here for Assistance with Completing the Entries for the Third Level Principal Disclosure for the Applicant](#)

<u>Select the corresponding Second Level Principal Entity # from above for which the Third Level Principal is being identified</u>	<u>Third Level Entity #</u>	<u>Select the type of Principal being associated with the corresponding Second Level Principal Entity</u>	<u>Enter Name of Third Level Principal who must be either a Natural Person or a Trust</u>	<u>The organizational structure of Third Level Principal identified Must be either a Natural Person or a Trust</u>	<u>3rd Level Principal % Ownership of 2nd Level Principal</u>
2.A. (Big Bite 2022 Trust)	2.A.(1)	Trustee	Cary Rosenblum	Natural Person	0.0000%
2.A. (Big Bite 2022 Trust)	2.A.(2)	Beneficiary	Cary Rosenblum	Natural Person	100.0000%
2.A. (Big Bite 2022 Trust)	2.A.(3)	Beneficiary	Jennifer Rosenblum	Natural Person	0.0000%
2.A. (Big Bite 2022 Trust)	2.A.(4)	Beneficiary	Elijah Rosenblum	Natural Person	0.0000%
<Select a #>		<Select an option>		<Select an option>	
2.B. (BRW Family 2022 Trust)	2.B.(1)	Trustee	Ben Brewer	Natural Person	0.0000%
2.B. (BRW Family 2022 Trust)	2.B.(2)	Beneficiary	Ben Brewer	Natural Person	100.0000%
2.B. (BRW Family 2022 Trust)	2.B.(3)	Beneficiary	Jennifer Wells Brewer	Natural Person	0.0000%
<Select a #>		<Select an option>		<Select an option>	
<Select a #>		<Select an option>		<Select an option>	
<Select a #>		<Select an option>		<Select an option>	
2.C. (RCS 2022 Trust)	2.C.(1)	Trustee	Ryan Seibels	Natural Person	0.0000%
2.C. (RCS 2022 Trust)	2.C.(2)	Beneficiary	Ryan Seibels	Natural Person	100.0000%
2.C. (RCS 2022 Trust)	2.C.(3)	Beneficiary	Mary Katherine Seibels	Natural Person	0.0000%
<Select a #>		<Select an option>		<Select an option>	
<Select a #>		<Select an option>		<Select an option>	
<Select a #>		<Select an option>		<Select an option>	
2.D. (Nelson Family 2022 Trust)	2.D.(1)	Trustee	C. Hunter Nelson	Natural Person	0.0000%
2.D. (Nelson Family 2022 Trust)	2.D.(2)	Beneficiary	C. Hunter Nelson	Natural Person	100.0000%

Principal Disclosures for the Applicant

[illegible]

Fourth Principal Disclosure Level:

ECG Ridge Road, LP

[Click here for Assistance with Completing the Entries for the Fourth Level Principal Disclosure for the Applicant](#)

<u>Select the corresponding Third Level Principal Entity # from above for which the Fourth Level Principal is being identified</u>	<u>Select the type of Principal being associated with the corresponding Third Level Principal Entity</u>	<u>Enter Name of Fourth Level Principal who must be a Natural Person</u>	<u>The organizational structure of Fourth Level Principal identified Must Be a Natural Person</u>	<u>4th Level Principal % Ownership of 3rd Level Principal</u>
2.K.(5) (Canary Ventures Trust)	Trustee	Scott Sohr	Natural Person	0.0000%
2.K.(5) (Canary Ventures Trust)	Beneficiary	Scott Sohr	Natural Person	100.0000%
2.K.(5) (Canary Ventures Trust)	Beneficiary	Lyn Sohr	Natural Person	0.0000%
2.K.(5) (Canary Ventures Trust)	Beneficiary	Andrew Sohr	Natural Person	0.0000%
2.K.(5) (Canary Ventures Trust)	Beneficiary	Austin Sohr	Natural Person	0.0000%
2.K.(5) (Canary Ventures Trust)	Beneficiary	Audrey Dieterich	Natural Person	0.0000%
2.K.(5) (Canary Ventures Trust)	Beneficiary	Gracia Steen	Natural Person	0.0000%
<Select a #>	<Select an option>		Natural Person	
2.K.(1) (Big Bite Affordable Trust)	Trustee	Rosenblum, Cary	Natural Person	0.0000%
2.K.(1) (Big Bite Affordable Trust)	Beneficiary	Rosenblum, Cary	Natural Person	100.0000%
2.K.(1) (Big Bite Affordable Trust)	Beneficiary	Rosenblum, Jennifer	Natural Person	0.0000%
2.K.(1) (Big Bite Affordable Trust)	Beneficiary	Rosenblum, Eliah	Natural Person	0.0000%

Principal Disclosures for the Applicant

[illegible]

Principal Disclosures for the Developer

How many Developers are part of this Application structure?

1

Select the organizational structure for the Developer entity:

The Developer is a: Limited Liability Company

Provide the name of the Developer Limited Liability Company:

ECG Ridge Road Developer, LLC

First Principal Disclosure Level:

ECG Ridge Road Developer, LLC

[Click here for Assistance with Completing the Entries for the First Level Principal Disclosure for a Developer](#)

First Level Entity #	Select Type of Principal of Developer	Enter Name of First Level Principal	Select organizational structure of First Level Principal identified
1.	Member	Big Bite 2022 Trust	Trust
2.	Member	BRW Family 2022 Trust	Trust
3.	Member	RCS 2022 Trust	Trust
4.	Member	Nelson Family 2022 Trust	Trust
5.	Member	Joseph Horowitz	Natural Person
6.	Member	Canary Ventures Trust	Trust
7.	Member	John Shepard	Natural Person
8.	Member	Mark McCord	Natural Person
9.	Member	Cochrane Jamison	Natural Person
10.	Managing Member	C. Hunter Nelson	Natural Person
11.	Member	Elmington Affordable, LLC	Limited Liability Company
12.	<Select an option>		<Select an option>
13.	<Select an option>		<Select an option>
14.	<Select an option>		<Select an option>
15.	<Select an option>		<Select an option>
16.	<Select an option>		<Select an option>
17.	<Select an option>		<Select an option>
18.	<Select an option>		<Select an option>
19.	<Select an option>		<Select an option>
20.	<Select an option>		<Select an option>

Second Principal Disclosure Level:

ECG Ridge Road Developer, LLC

[Click here for Assistance with Completing the Entries for the Second Level Principal Disclosure for a Developer](#)

Select the corresponding First Level Principal Entity # from above for which the Second Level Principal is being identified	Second Level Entity #	Select the type of Principal being associated with the corresponding First Level Principal Entity	Enter Name of Second Level Principal	Select organizational structure of Second Level Principal identified
1. (Big Bite 2022 Trust)	1.A.	Trustee	Cary Rosenblum	Natural Person
1. (Big Bite 2022 Trust)	1.B.	Beneficiary	Cary Rosenblum	Natural Person
1. (Big Bite 2022 Trust)	1.C.	Beneficiary	Jennifer Rosenblum	Natural Person
1. (Big Bite 2022 Trust)	1.D.	Beneficiary	Elijah Rosenblum	Natural Person
<Select a #>		<Select an option>		<Select an option>
2. (BRW Family 2022 Trust)	2.A.	Trustee	Ben Brewer	Natural Person
2. (BRW Family 2022 Trust)	2.B.	Beneficiary	Ben Brewer	Natural Person
2. (BRW Family 2022 Trust)	2.C.	Beneficiary	Jennifer Wells Brewer	Natural Person
<Select a #>		<Select an option>		<Select an option>
<Select a #>		<Select an option>		<Select an option>
<Select a #>		<Select an option>		<Select an option>
3. (RCS 2022 Trust)	3.A.	Trustee	Ryan Seibels	Natural Person
3. (RCS 2022 Trust)	3.B.	Beneficiary	Ryan Seibels	Natural Person
3. (RCS 2022 Trust)	3.C.	Beneficiary	Mary Katherine Seibels	Natural Person

Principal Disclosures for the Developer

[illegible]

Proposed Revised Principal Disclosure Form

Select the organizational structure for the Applicant entity:

Provide the name of the Applicant Limited Partnership:

% Ownership input features will not be made available until invitation to credit underwriting

[Click here for Assistance with Completing the Entries for the First Level Principal Disclosure for the Applicant](#)

Second Principal Disclosure Level:

ECG Ridge Road, LP

[Click here for Assistance with Completing the Entries for the Second Level Principal Disclosure for the Applicant](#)

Page 1 of 10

Principal Disclosures for the Applicant

[illegible]**Third Principal Disclosure Level:**

ECG Ridge Road, LP

[Click here for Assistance with Completing the Entries for the Third Level Principal Disclosure for the Applicant](#)

<u>Select the corresponding Second Level Principal Entity # from above for which the Third Level Principal is being identified</u>	<u>Third Level Entity #</u>	<u>Select the type of Principal being associated with the corresponding Second Level Principal Entity</u>	<u>Enter Name of Third Level Principal who must be either a Natural Person or a Trust</u>	<u>The organizational structure of Third Level Principal identified Must be either a Natural Person or a Trust</u>	<u>3rd Level Principal % Ownership of 2nd Level Principal</u>
2.A. (Big Bite 2022 Trust)	2.A.(1)	Trustee	Cary Rosenblum	Natural Person	0.0000%
2.A. (Big Bite 2022 Trust)	2.A.(2)	Beneficiary	Cary Rosenblum	Natural Person	100.0000%
2.A. (Big Bite 2022 Trust)	2.A.(3)	Beneficiary	Jennifer Rosenblum	Natural Person	0.0000%
2.A. (Big Bite 2022 Trust)	2.A.(4)	Beneficiary	Elijah Rosenblum	Natural Person	0.0000%
<Select a #>		<Select an option>		<Select an option>	
2.B. (BRW Family 2022 Trust)	2.B.(1)	Trustee	Benjamin Brewer	Natural Person	0.0000%
2.B. (BRW Family 2022 Trust)	2.B.(2)	Beneficiary	Benjamin Brewer	Natural Person	100.0000%
2.B. (BRW Family 2022 Trust)	2.B.(3)	Beneficiary	Jennifer Wells Brewer	Natural Person	0.0000%
<Select a #>		<Select an option>		<Select an option>	
<Select a #>		<Select an option>		<Select an option>	
<Select a #>		<Select an option>		<Select an option>	
2.C. (RCS 2022 Trust)	2.C.(1)	Trustee	Ryan Seibels	Natural Person	0.0000%
2.C. (RCS 2022 Trust)	2.C.(2)	Beneficiary	Ryan Seibels	Natural Person	100.0000%
2.C. (RCS 2022 Trust)	2.C.(3)	Beneficiary	Mary Katherine Seibels	Natural Person	0.0000%
<Select a #>		<Select an option>		<Select an option>	
<Select a #>		<Select an option>		<Select an option>	
<Select a #>		<Select an option>		<Select an option>	
2.D. (Nelson Family 2022 Trust)	2.D.(1)	Trustee	C. Hunter Nelson	Natural Person	0.0000%
2.D. (Nelson Family 2022 Trust)	2.D.(2)	Beneficiary	C. Hunter Nelson	Natural Person	100.0000%

Principal Disclosures for the Applicant

[illegible]

Fourth Principal Disclosure Level:

ECG Ridge Road, LP

[Click here for Assistance with Completing the Entries for the Fourth Level Principal Disclosure for the Applicant](#)

Select the corresponding Third Level Principal Entity # from above for which the Fourth Level Principal is being identified	Select the type of Principal being associated with the corresponding Third Level Principal Entity	Enter Name of Fourth Level Principal who must be a Natural Person	The organizational structure of Fourth Level Principal identified Must Be a Natural Person	4th Level Principal % Ownership of 3rd Level Principal
2.K.(5) (Canary Ventures Trust)	Trustee	Scott Sohr	Natrual Person	0.0000%
2.K.(5) (Canary Ventures Trust)	Beneficiary	Scott Sohr	Natrual Person	100.0000%
2.K.(5) (Canary Ventures Trust)	Beneficiary	Lyn Sohr	Natrual Person	0.0000%
2.K.(5) (Canary Ventures Trust)	Beneficiary	Andrew Sohr	Natrual Person	0.0000%
2.K.(5) (Canary Ventures Trust)	Beneficiary	Austin Sohr	Natrual Person	0.0000%
2.K.(5) (Canary Ventures Trust)	Beneficiary	Audrey Dieterich	Natrual Person	0.0000%
2.K.(5) (Canary Ventures Trust)	Beneficiary	Gracia Steen	Natrual Person	0.0000%
<Select a #>	<Select an option>		Natrual Person	
2.K.(1) (Big Bite Affordable Trust)	Trustee	Rosenblum, Cary	Natrual Person	0.0000%
2.K.(1) (Big Bite Affordable Trust)	Beneficiary	Rosenblum, Cary	Natrual Person	100.0000%
2.K.(1) (Big Bite Affordable Trust)	Beneficiary	Rosenblum, Jennifer	Natrual Person	0.0000%
2.K.(1) (Big Bite Affordable Trust)	Beneficiary	Rosenblum, Elijah	Natrual Person	0.0000%

Principal Disclosures for the Applicant

[illegible]

Principal Disclosures for the Developer

How many Developers are part of this Application structure?

1

Select the organizational structure for the Developer entity:

The Developer is a: Limited Liability Company

Provide the name of the Developer Limited Liability Company:

ECG Ridge Road Developer, LLC

First Principal Disclosure Level:

ECG Ridge Road Developer, LLC

[Click here for Assistance with Completing the Entries for the First Level Principal Disclosure for a Developer](#)

<u>First Level Entity #</u>	<u>Select Type of Principal of Developer</u>	<u>Enter Name of First Level Principal</u>	<u>Select organizational structure of First Level Principal identified</u>
1.	<u>Member</u>	<u>Big Bite 2022 Trust</u>	<u>Trust</u>
2.	<u>Member</u>	<u>BRW Family 2022 Trust</u>	<u>Trust</u>
3.	<u>Member</u>	<u>RCS 2022 Trust</u>	<u>Trust</u>
4.	<u>Member</u>	<u>Nelson Family 2022 Trust</u>	<u>Trust</u>
5.	<u>Member</u>	<u>Joseph Horowitz</u>	<u>Natural Person</u>
6.	<u>Member</u>	<u>Canary Ventures Trust</u>	<u>Trust</u>
7.	<u>Member</u>	<u>John Shepard</u>	<u>Natural Person</u>
8.	<u>Member</u>	<u>Mark McCord</u>	<u>Natural Person</u>
9.	<u>Member</u>	<u>Cochrane Jamison</u>	<u>Natural Person</u>
10.	<u>Managing Member</u>	<u>C. Hunter Nelson</u>	<u>Natural Person</u>
11.	<u>Member</u>	<u>Elmington Affordable, LLC</u>	<u>Limited Liability Company</u>
12.	<u><Select an option></u>		<u><Select an option></u>
13.	<u><Select an option></u>		<u><Select an option></u>
14.	<u><Select an option></u>		<u><Select an option></u>
15.	<u><Select an option></u>		<u><Select an option></u>
16.	<u><Select an option></u>		<u><Select an option></u>
17.	<u><Select an option></u>		<u><Select an option></u>
18.	<u><Select an option></u>		<u><Select an option></u>
19.	<u><Select an option></u>		<u><Select an option></u>
20.	<u><Select an option></u>		<u><Select an option></u>

Second Principal Disclosure Level:

ECG Ridge Road Developer, LLC

[Click here for Assistance with Completing the Entries for the Second Level Principal Disclosure for a Developer](#)

<u>Select the corresponding First Level Principal Entity # from above for which the Second Level Principal is being identified</u>	<u>Second Level Entity #</u>	<u>Select the type of Principal being associated with the corresponding First Level Principal Entity</u>	<u>Enter Name of Second Level Principal</u>	<u>Select organizational structure of Second Level Principal identified</u>
<u>1. (Big Bite 2022 Trust)</u>	1.A.	<u>Trustee</u>	<u>Cary Rosenblum</u>	<u>Natural Person</u>
<u>1. (Big Bite 2022 Trust)</u>	1.B.	<u>Beneficiary</u>	<u>Cary Rosenblum</u>	<u>Natural Person</u>
<u>1. (Big Bite 2022 Trust)</u>	1.C.	<u>Beneficiary</u>	<u>Jennifer Rosenblum</u>	<u>Natural Person</u>
<u>1. (Big Bite 2022 Trust)</u>	1.D.	<u>Beneficiary</u>	<u>Elijah Rosenblum</u>	<u>Natural Person</u>
<u><Select a #></u>		<u><Select an option></u>		<u><Select an option></u>
<u>2. (BRW Family 2022 Trust)</u>	2.A.	<u>Trustee</u>	<u>Benjamin Brewer</u>	<u>Natural Person</u>
<u>2. (BRW Family 2022 Trust)</u>	2.B.	<u>Beneficiary</u>	<u>Benjamin Brewer</u>	<u>Natural Person</u>
<u>2. (BRW Family 2022 Trust)</u>	2.C.	<u>Beneficiary</u>	<u>Jennifer Wells Brewer</u>	<u>Natural Person</u>
<u><Select a #></u>		<u><Select an option></u>		<u><Select an option></u>
<u><Select a #></u>		<u><Select an option></u>		<u><Select an option></u>
<u><Select a #></u>		<u><Select an option></u>		<u><Select an option></u>
<u>3. (RCS 2022 Trust)</u>	3.A.	<u>Trustee</u>	<u>Ryan Seibels</u>	<u>Natural Person</u>
<u>3. (RCS 2022 Trust)</u>	3.B.	<u>Beneficiary</u>	<u>Ryan Seibels</u>	<u>Natural Person</u>
<u>3. (RCS 2022 Trust)</u>	3.C.	<u>Beneficiary</u>	<u>Mary Katherine Seibels</u>	<u>Natural Person</u>

Principal Disclosures for the Developer

[illegible]